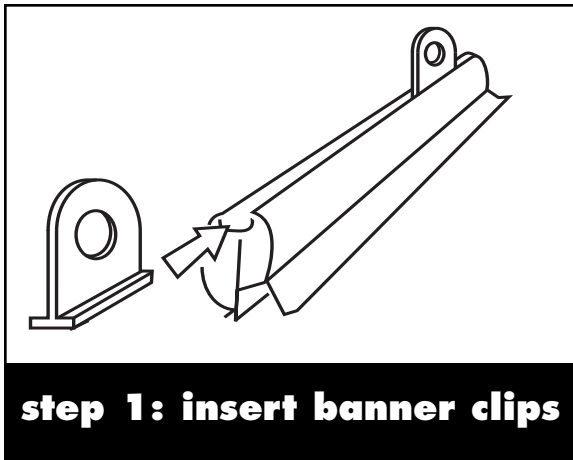
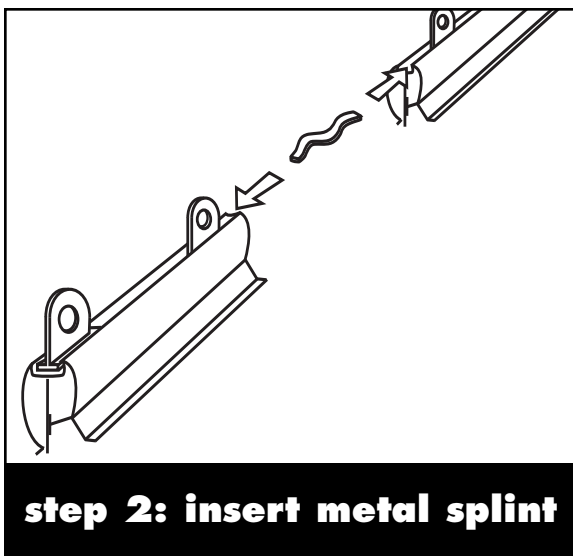


# NX SNAP RAIL™ installation instructions



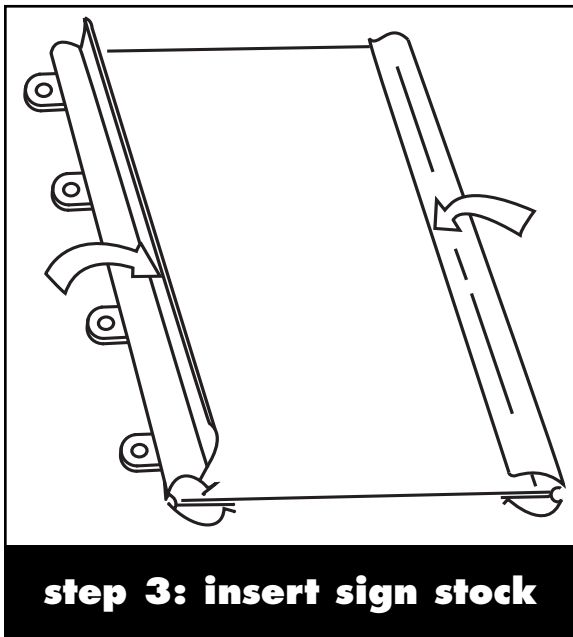
## STEP 1:

- Insert the banner clips into either end of each top rail. Use two per top rail (four total).



## STEP 2:

- Working on a flat surface, insert the metal alignment splint into the same groove the banner clip went into. Do this for both top and bottom snap rails.



## STEP 3:

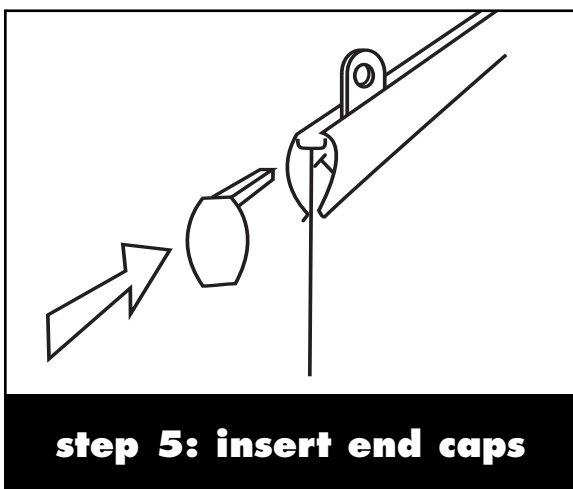
- Place banner on a flat surface. Fully open hinged door and insert sign fully into opening.

## STEP 4:

- Close hinged door fully to lock sign into holder. Start in the center and work to the outside.

**HINT: NX SNAPRAIL IS DESIGNED TO CLOSE EASILY ONLY WHEN SIGN STOCK IS INSERTED AS SHOWN.**

Use on stock up to .090" thick.



## STEP 5:

- Insert 4 end caps into the ends of the rails.

## STEP 6:

- Hang using 4" wire hooks (four total).

